

INDIANA -PEDESTRIAN BRIDGE CLIENT REFERENCE LIST **(PARTIAL)**

1) City of Fishers – 96th Street Trail – East of Geist Reservoir – 2012



52' Single Span – CuNap Treated Timber Glu-Lam Beam Main Span on Timber Pile Bents w/ 211 LFT of Approach Treated Timber Boardwalk Structure

Contact: City of Fishers, Indiana
Phone: 317-595-3162 (City Engineer's Office)

2) Town of Syracuse – Syracuse Trail – Pickwick Segment – 2010

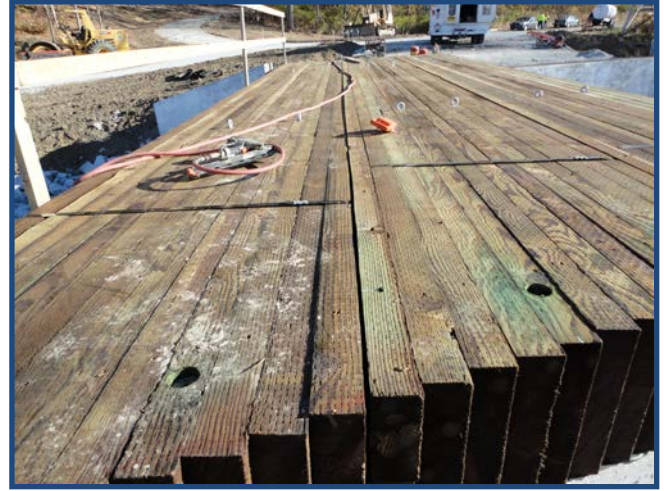


30' Single Span – CuNap Treated Timber Stringer Bridge on Timber Pile Abutments

Contact: Mr. Spike Ford, Trails Committee Chairman, Town of Syracuse
Phone: 574-457-3348 (Town Manager's Office)

- TREATED TIMBER BRIDGES
 - PEDESTRIAN BRIDGES
 - COVERED BRIDGES
- SALT STORAGE BUILDINGS
- DECKING MATERIALS AND SUPPLIES

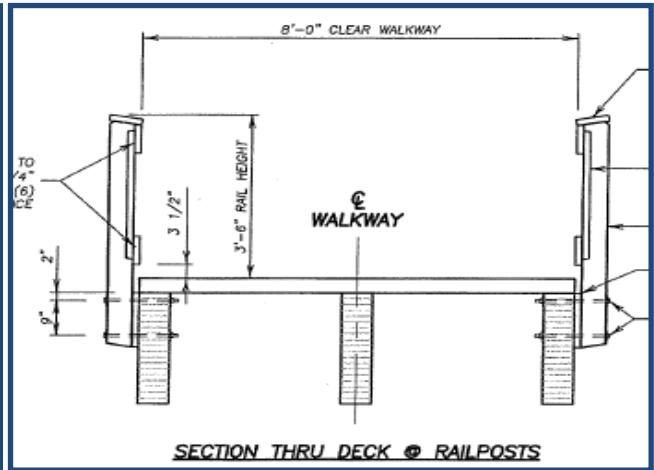
3) City of Westfield - McGregor Park Pedestrian/Vehicular Bridge – 2010



Single Span – xx' Span, CuNap Treated Panel-Lam Bridge on Concrete Abutments
 Built with Federal Aid Monies thru INDOT Bid Letting Process

Contact: Mr. Neil B. VanTrees, City Engineer
 Phone: 317-804-3100

4) City of Carmel – 131st Street Multi-Use Trail Bridges – East of Olio Road – 2008



48' Single Span – CuNap Treated Timber Glu-Lam Beams on Timber Pile Abutments

Contact: City of Carmel, Indiana
 Phone: 317-571-2441 (City Engineer's Office)

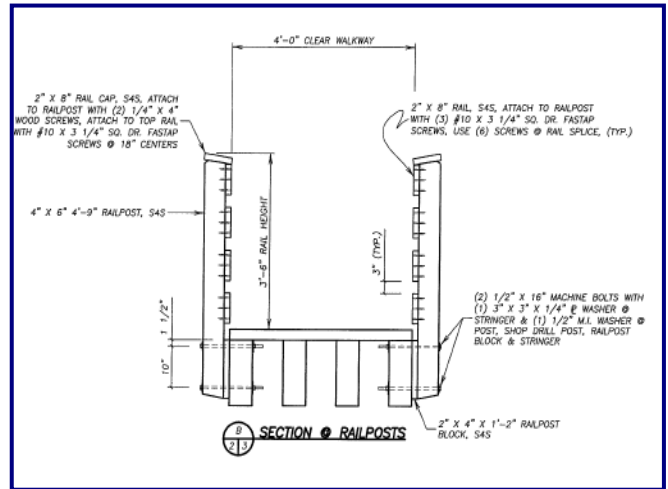
- TREATED TIMBER BRIDGES
- PEDESTRIAN BRIDGES
- COVERED BRIDGES
- SALT STORAGE BUILDINGS
- DECKING MATERIALS AND SUPPLIES

5) Town of Nappanee, IN. – Stauffer Park - Replacement Bridge - 2005



Single Span – 34’-3” Span, Twin Glu-Lam Beam Bridge, Picket Pedestrian Railing
 Contact: Mr. Rod Beer, President, Beer & Slabaugh, Inc. Phone: (574) 773-3413
 23965 US Highway 6, Nappanee, IN. 46550

6) City of Shelbyville – Aaron Drive Sidewalk Replacement Bridge - 2007



Single Span – 32’-0”, Multiple Solid Sawn Beam Pedestrian Bridge
 Contact: Mr. Shane Peters, Former Street Superintendent (Current: Jennifer Jones)
 Street Dept. Phone: (317) 392-5169
 605 Hale Road, Shelbyville, IN. 46176

7) City of Noblesville Parks Department – Dr. James A. Dillon Park - 2006



Single Span, 24' Panel Lam Timber Pedestrian Path Bridge

Also Completed 7 Golf Cart Bridges in 2014-'15 for Fox Prairie City Golf Course

Contact: Mr. Brandon Bennett, Parks Director Phone: (317) 776-6350

701 Cicero Road, Noblesville, IN 46060 Phone: 574-533-0538

8) Indiana Department of Natural Resources – Spring Mill State Park – 2006



Single Span, 60'-0", Multiple Glu-Lam Timber Girder Trail Bridge

Contact: Mike List, Indiana State Parks & Reservoirs Phone: (317) 232-3348

Contractor: Tri-County Builders Co., Inc.

Attn: Michael Coursey Phone: (812) 275-3304

3307 Mitchell Rd., Bedford, IN 47421